



Freme Holidays

Established in 1971...

- a truly memorable holiday experience!

Book with us now!

For details, please contact us;

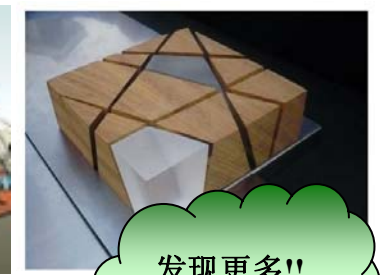
Prices are subject to change without prior notice.

FREME Travel : Kuala Belait 3335025/035 || Bandar 2234277-79 || Seria 3228171-74 || Tutong 4260519-21

Email : holidays@freme.com

JJ Tour : Kuala Belait 3333181/267 || Bandar 2453110/112/116/117

Website : www.freme.com



Better City;
Better Life!

Shanghai World Expo

上海世界博覽會

发现更多!!
体验更多!!

Tour Code:
CN0128D-10170910

Specialty:
Shanghai Expo (2 days entrance)/
Acrobatic Show/Oriental Pearl TV
Tower/The Bund/Yu Garden/
Shanghai Museum

Accommodation:
3-star (*) Hotel

Departure date:
10th to 17th Sept 2010

**Minimum Group Sizes of 16
Persons**

Package Cost:
Adult (Twin Shared) : B\$1,277
Child with Bed(Twin Shared): B\$1,197
Child with Extra Bed : B\$1,050
Child No Bed : B\$ 905
(Age below 6 years old)
Single Occupancy : B\$1,555

Includes:
Return International on economy
class, Tours & transfer as stated,
meals as stated, entrance fee
and Mandarin speaking guide

Exclude:
Airport tax & fuel surcharge@
B\$360 (subject to change), Visa
fee, Tips B\$40 per person,
Personal travel insurance

Local product shopping stop
1. Jade Factory 玉器
2. Pearl House 珍珠
3. Silk 丝绸

Sep 10: Brunei 汶萊 → Shanghai 上海 (Meal on board) SQ181 1800-2010 & SQ826 0115-0635hrs
Please assemble 2½ hrs at Brunei airport for your connecting flight to Shanghai via Singapore.
请在团体出发的2½小时前齐集在汶莱机场, 搭乘新航经新加坡飞往上海。

Sep 11: Shanghai 上海 (Breakfast/Lunch/Dinner)
Greet and meet upon arrival at Shanghai Pudong International Airport. Visit **Oriental Pearl TV Tower, Pedestrian Nanjing Road and The Bund, Qipu road wholesale market**
抵达上海, 东方明珠(含至二层的费用)-上海的电视塔是上海的地标之一。南京路-上海最繁华的街区, 素有“中华商业第一街”之誉。外滩(又名中山东一路)以全长约 1.5 公里的黄浦江畔, 是到上海观光的游客必到之地。七浦路服装批发市场。

Sep 12: Shanghai 上海 (Breakfast/Lunch/Dinner)
Visit **Jade Buddha Temple; Shop at Fresh Water Pearl Center and Taopao City; Visit Shanghai Museum (exclude speaker)**. Enjoy an exciting **Acrobatic Show** for the evening entertainment.
玉佛寺是因为寺内的两尊玉佛而得名。一尊是被称作“镇寺之宝”的释迦牟尼坐像, 高 1.95 米, 由整块玉石雕琢而成。在**珍珠店和淘宝城商场**。**上海博物馆**是一座大型的中国古代艺术博物馆; 藏珍贵文物 12 万件, 其中尤以青铜器、陶瓷器、书法、绘画为特色。晚餐後, 欣赏杂技表演

Sep 13: Shanghai 上海 (Breakfast/Lunch/Dinner)
Visit **Yu Garden, Old Shanghai; Silk Factory; Visit Xintiandi, Jade Center, Lujiabang fabric market. Cruise on Huangpu River**
参观江南古典园林著名的**豫园**; 是闻名中外的名胜古迹和游览胜地。续游**城隍庙和丝绸厂**。跟着游**新天地和玉器博览馆**。乘船游黄浦江; 观赏两岸景色, 不失为游览上海的一个方式也可体会一下老上海的风情。陆家浜轻纺市场。

Sep 14: Shanghai 上海 (Breakfast/Dinner)
Visit **Shanghai Expo 2010** - a showcase in the grandest tradition of international Chinese expositions. The theme is **"Better City - Better Life"** and signifies Shanghai's new theme for the 21st century as a major economic and cultural center. It is expected to generate the largest number of visitors . The expo Logo features the Chinese character 世 'world' modified to represent three figurines along with the date of 2010
参观 **2010 上海世界博览园区**。午餐园区内自理。晚餐後送酒店。

Sep 15: Shanghai 上海 (Breakfast/Dinner)
Visit **Shanghai Expo** which will last up to Oct 31st 2010, it will be the biggest event in its history, with over 185 countries and 45 international organizations participating.70 million visitors are expected to attend with more than 20,000 cultural shows scheduled at the Expo itself. 上海世博展览将开放至 10 月 31 日 2010 年。此世博会超过 185 国家和 45 国际组织参与, 估计会吸引超过 7 千万人参观。这天您可以自由参观世博园区, 午餐园区内自理, 下午用晚餐後送酒店。

Sep 16: Shanghai 上海 (Breakfast/Dinner)
It is the third largest event in the world in terms of economic and cultural impact, after the FIFA World Cup and the Olympic Games. Expos have been organized for more than 150 years — longer than both the (modern) Olympic Games and the World Cup. The first Expo was held in The Crystal Palace in Hyde Park, London, in 1851 under the title "Great Exhibition of the Works of Industry of All Nations". The International Exhibitions Bureau oversees the World Expo. After dinner, transfer to airport
全天自由活动(不含餐, 车, 导游)。晚餐後, 送往機場。

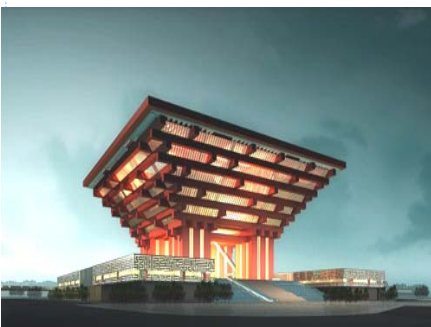
Sep 17: Shanghai 上海 → Brunei 汶萊 (Meal on board) SQ825 0100-0525 & SQ182 1445-1655
Depart Shanghai for your departure flight to Brunei via Singapore.
We hope you have an enjoyable and memorable trip with Freme Holidays!
乘搭新航经新加坡回返汶莱。行程结束.希望您与“飞美假期”共享愉快的旅程!!

* The sequence of the itinerary may change to ensure smooth running of the tour.

** Travel Insurance is recommended before commencing of your holiday /trip.

* 在个别情况下, 行程表可在不先通知下被更改

* 我們建議您在出發前購買旅遊保險, 給您的旅遊加以保障



200110 JEN